

Fruit  
Wines

果  
酒

Zhuoyu  
Wang

# 果酒

## 4 Main Locations

Guangdong

Shanghai

Sichuan

Zhejiang  
(Shaoxing)



**Jiu  
Niang  
酒  
酿**

**Sweet  
Fermented  
Rice**



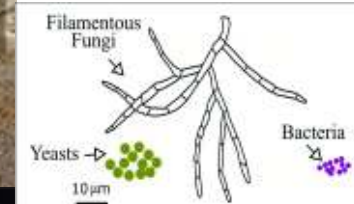
酒饼(酒曲)  
Yeast Balls



# Bai jiu 白 酒



酒  
曲  
Qu



Fungi:  
*Aspergillus oryzae*  
*Rhizopus oryzae*

Yeast:  
*Saccharomycopsis fibuligera*

Qu

曲



Wheat,  
Cereal Grains, Chaff,  
(vegetables)



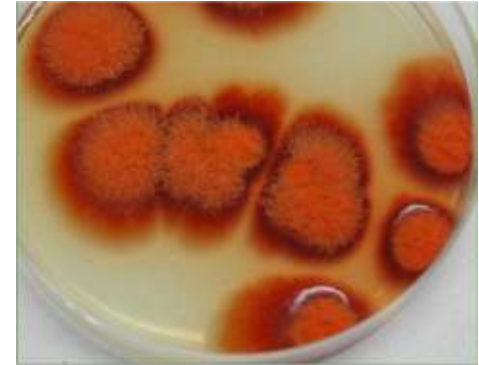
Daqu



Cooked Rice



Xiaoqu



*Monascus purpureus*



Hongqu





Water,  
Base (Sorghum,  
Green Plum),  
White Sugar,  
Green Plum Juice  
Concentrate,  
Caramel Color



Water,  
Base (from steamed  
glutinous rice),  
Sugar,  
Green plums



Water,  
Soju,  
Honey,  
Sugar,  
Green plums

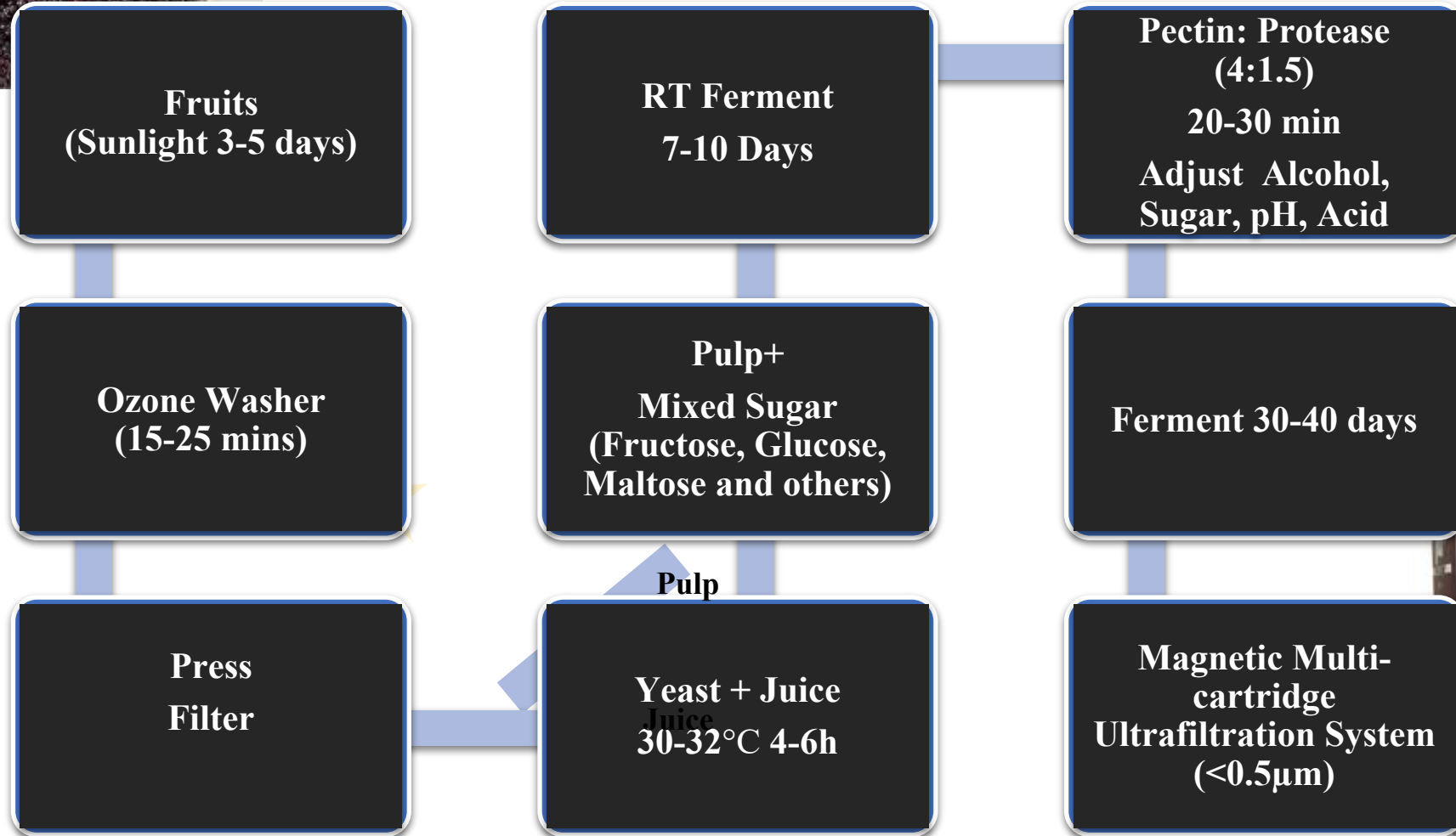


Plum Wine

# Plum Wine



## Chinese Mulberry Wine (industry)







# Home-brewed Mulberry Wine

- Natural Fermentation of mulberries: wild yeast fermentation

- Fruits:

Easy to be contaminated with bacteria

Quality control of fruits

- Wine:

Hard to filter and clarify

Contamination

**Ripe**  
**Clean**

Add sugar , control Brix (22-23)

Acid

Pectinase

Temperature

Yeast Strains and nutrition

Filtration Equipment/ Technology

Prevent Contamination





## Montana Winery Fruit Wines



## Montana Winery Fruit Wines

- Low alcohol “cider style” (2-7% alcohol)
- Dry or Off-dry fruit wine (8.5-13.5%)
- Sweet Fruit Wine (usually done with berry wines)
- Cryo-extracted fruit wines
- Fortified or “Port-style” fruit wines.
- Sparkling Fruit Wine
- Blend

+ **Tea**



+ **Flower**





## Fruit Wine Consideration (Generally)



	PECTIN CONTENT			ACIDITY		
	HIGH	MEDIUM	LOW	HIGH	MEDIUM	LOW
Blackcurrants	• • • •			• • • •		
Crabapples	• • • •			• • • •		
Cranberries	• • • •				• • • •	
Gooseberries	• • • •			• • • •		
Plums (unripe)	• • • •			• • • •		
Quinces	• • • •			• • • •	• • • •	
Currants	• • • •			• • • •		
Citrus Fruits	• • • •	• • • •		• • • •	• • • •	
Cooking Apples	• • • •	• • • •		• • • •	• • • •	
Apricots		• • • •			• • • •	
Grapes (unripe)		• • • •			• • • •	
Loganberries		• • • •			• • • •	
Medlars		• • • •				• • • •
Morello Cherries		• • • •			• • • •	
Plums (ripe)		• • • •			• • • •	
Blackberries		• • • •	• • • •		• • • •	
Blueberries		• • • •	• • • •			• • • •
Wild Blackberries			• • • •			• • • •
Cherries (sweet)			• • • •			• • • •
Figs			• • • •			• • • •
Grapes (ripe)			• • • •			• • • •
Melons			• • • •			• • • •
Nectarines			• • • •			• • • •
Peaches			• • • •			• • • •
Pears			• • • •			• • • •
Rhubarb			• • • •	• • • •		
Strawberries			• • • •			• • • •

Acid: tartaric acid, citric acid, malic acid

Alcohol  
Sweetness



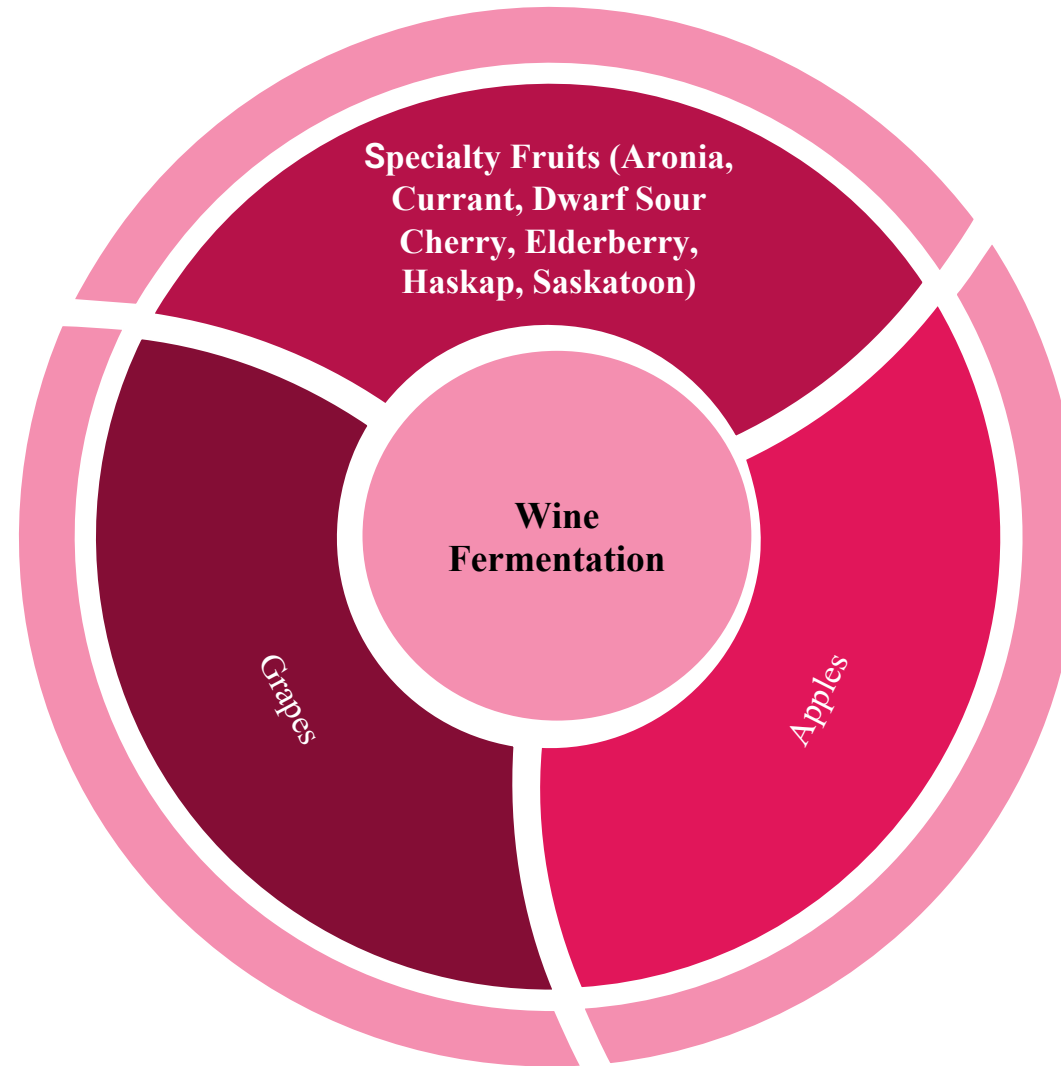
Acidity  
Tannin

Adjust  
Blend  
Chips (Oak)  
Dilute  
...

# Research



# Research



**Yogurt Wine**





To be continued...